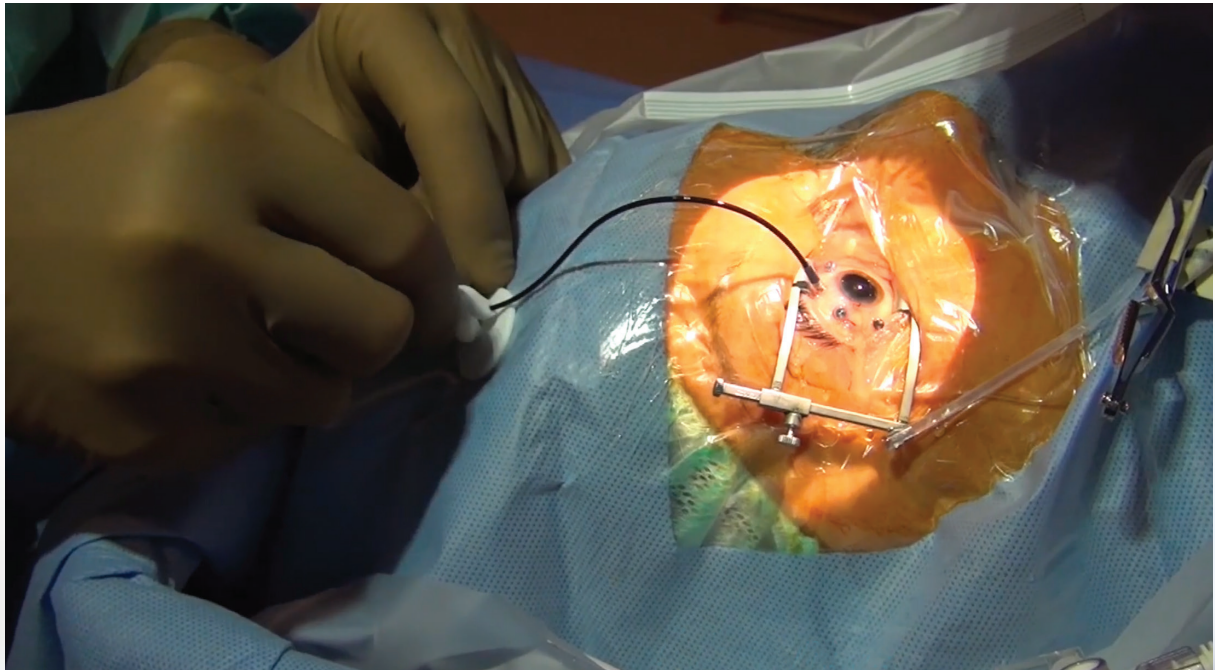


# BVI

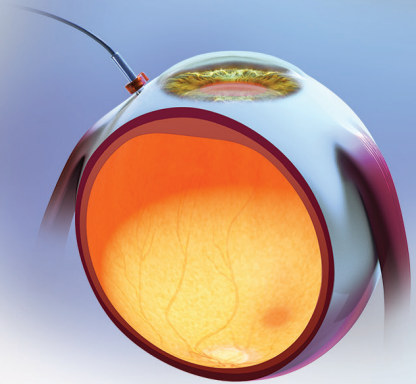
## Addressing Control of Light Beam Direction

### 29G Spotlight Directional Chandelier



Enabling Bimanual Surgery With:

- Directional control of light-beam for enhanced visualization
- 29G valved entry system for straightforward light fiber entrance, fixation and removal
- Stationary and wide field endo-illumination



Patent Pending

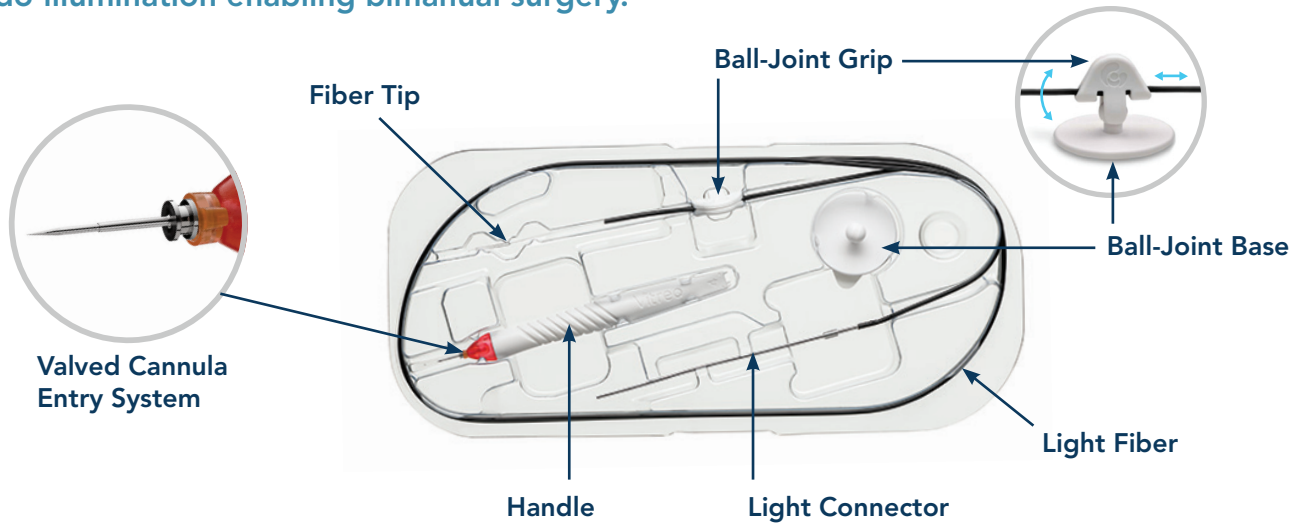
**Vitreo**

Vitreoretinal Surgical Products

[bvimedical.com](http://bvimedical.com)

# 29G Spotlight Directional Chandelier

Sets new standards in light beam direction control, it delivers stationary, diffuse wide-field endo-illumination enabling bimanual surgery.



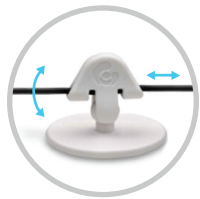
## Features and Benefits

Patent Pending



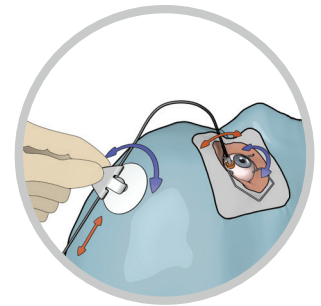
### Valved Cannula and Entry System

- Ultra-sharp entry system with integrated scleral marker (3.0 - 4.0 mm)
- Straightforward insertion, fixation and removal of the light fibre
- 29G water-tight and self-sealing incisions



### Directional Control System

- Directional control of light beam
- Unique ball-joint mechanism to control light beam direction
- Enables re-orientating light beam direction intraoperatively
- Delivers stationary and wide field endo-illumination



**“The Spotlight Directional Chandelier offers an easy and quick insertion in combination with an effective directional control of the light beam.”**

— Developed in collaboration with Professor Claus Eckardt



Description	SKU #
29G Spotlight Directional Chandelier; Packaged 5/Bx, Sterile	LF29.D02

### Endo-Illumination Brief Statement for VitreX Spotlight Direction Chandelier:

**Indications for Use:** VitreX Disposable 90° Directional Illuminated Laser Probes, Light Fibers and Chandelier are intended for illumination at the light wavelength range of 425nm to 700nm during ophthalmic surgery.

**Precautions:** Do not use product if package integrity has been breached or compromised; do not use product after the expiration date.

**Caution (USA):** Federal law restricts this device to sale by or on order of a licensed physician.

**Attention:** See Instructions for Use included in product packaging for complete listing of indications and warnings.

Light Source Adaptors*	SKU #
Constellation® Light Source Adaptor	LF00.R01
Stellaris® Light Source Adaptor	LF00.R02
Geuder® Light Source Adaptor	LF00.R03
Ruck® Light Source Adaptor	LF00.R04
DORC® Light Source Adaptor	LF00.R05

\* All product names, trademarks and registered trademarks are property of their respective owners.

FOR COMPLETE PRODUCT INSTRUCTIONS, PLEASE REFER TO THE BVI IFU OR PRODUCT INSERT

US Tel: 866-906-8080 Fax: 866-906-4304  
Email: customersupport@bvimedical.com



BVI and all other trademarks (unless noted otherwise) are property of BVI. BVI ©2020

1530380-02